



The East Asian Seas Congress 2009

Partnerships At Work: Local Implementation And Good Practices

23 – 27 November • Philippine International Convention Center, Manila, Philippines

Information Bulletin No. 1

The East Asian Seas (EAS) Congress 2009

The EAS Congress is a unique event of the East Asian region. It is an information market place that brings together policymakers, experts, managers and practitioners from international organizations and programs, national and local governments, scientific and academic institutions, non-government organizations, the private sector and community-based organizations - to share information, to strengthen multi-sectoral and multi-disciplinary co-operation, and to build partnerships that provide steady advancement towards the sustainability of the Seas of East Asia. A basic goal of the Congress is to create a climate for innovative thinking and foresight to identify ways and means of solving existing and emerging challenges and constraints to social, economic and ecological objectives and targets at the local, national, regional and global levels. The EAS Congress 2009 will highlight local implementation and good practices as key factors in scaling up the sustainable management of marine and coastal areas across the region.

Features

The EAS Congress 2009 features the:

- Third Ministerial Forum: Adaptation to Climate Change through Integrated Coastal and Ocean Management* – 26–27 November;
- International Conference on Sustainable Coastal and Ocean Development: Partnerships at Work: Local Implementation and Good Practices – 23–26 November;
- SEAnergies: Exhibit of Innovative Technologies and Good Practices – 23–26 November;
- Second EAS Youth Forum: Youth of the East Asian Seas Region and Climate Change – 23–26 November;
- Corporate Social Responsibility in the Sustainable Development of Manila Bay – 25 November;
- Business Forum on Dealing with the Challenges of Climate Change – 25 November;
- PEMSEA Network of Local Governments for Sustainable Coastal Development Meeting – TBD;
- Forum on Meeting Human Resource Requirements in Coastal and Ocean Governance – 26 November;
- Field Visit and other Special Events.

*By invitation only.

Host/Local Organizing Committee

The 2009 Congress is being hosted by the government of the Republic of the Philippines through the Department of Environment and Natural Resources (DENR).

Congress Secretariat

The Secretariat is based in the PEMSEA Resource Facility in Manila.

All communications regarding the Congress should be directed to:

Prof. Raphael P.M. Lotilla
Executive Director, PEMSEA Resource Facility and
Head, EAS Congress 2009 Secretariat
E-mail: congress@pemsea.org / eascongress@gmail.com
Telefax: (63-2) 926 9712

International Conference Themes and Workshop Topics

Theme	Workshop / Seminar Topic
(T1) Coastal and Ocean Governance	(T1:1) Coastal/ocean policy and legislation: Implementation and new initiatives
	(T1:2) Contributions of marine economic sectors to regional and national/ GDP in an uncertain climate
	(T1:3) The Continental Shelf: Post May 2009 Perspectives
	(T1:4) Addressing transboundary issues through regional/ subregional seas cooperation: Initiatives in East Asia
	(T1:5) The science in ecosystem-based management
	(T1:6) Land- and sea-use zoning: challenges and opportunities
(T2) Natural and Man-made Hazard Prevention and Management	(T2:1) Government/Industry partnerships for effective and consistent preparedness response to marine pollution in East Asia
	(T2:2) Meeting challenges of climate change at the local level through ICM
	(T2:3) Impacts of climate change at the coastal and ocean areas of the East Asian Seas region
	(T2:4) Development and Advances on Marine Biosafety in the Context of the Convention on Biodiversity
(T3) Habitat Protection, Restoration and Management	(T3:1) Networking of Marine Protected Areas: Benefits, Good Practices, Standards and Next Steps
	(T3:2) Indigenous Approaches to Habitat Protection and Restoration: Experiences in Sato Umi and other Community Initiatives
	(T3:3) Payment for Ecosystem Services: Financing Schemes and Mechanisms for Coastal and Marine Area Protection, Restoration and Managements
(T4) Water Use and Supply Management	(T4:1) Alternative energy from coasts, rivers and oceans
	(T4:2) Good policies and practices in water resources protection, restoration, utilization, conservation and management

(T5) Food Security and Livelihood Management	(T5:1) Ensuring food security through small-scale sustainable aquaculture practices
	(T5:2) The future role of fisheries in an urbanized world
	(T5:3) Livelihood management and sustainable coastal tourism
(T6) Pollution Reduction and Waste Management	(T6:1) Transboundary Pollution Reduction in River Basins and Coastal Areas
	(T6:2) Strategic Partnerships in pollution reduction: Catalyzing replication and scaling up of good practices

Congress Website

The Congress website contains information about the program schedule, plenary sessions, congress themes, workshops and seminars, submission of papers and abstracts and many others. It is accessible through www.pemsea.org/eascongress.

Pre- and Post-Congress Tours / Accompanying Persons Programme

Participants, spouses and/or accompanying persons who are interested in tours and leisure activities in the Philippines may contact the Secretariat for assistance. Further information will be provided as soon as detailed arrangements are made.

Registration Information

Participants must complete a registration form and return it by fax, email or post to the Secretariat. Registration and payment can also be made online at the Congress website. It is accessible through www.pemsea.org/eascongress/registration.

Registration Fees

US\$300 for international participants (Early bird rate: US\$250 if registered by 30 April)

US\$150 for students

US\$250 for local participants (Early bird rate: US\$200 if registered by 30 April)

The registration fee covers attendance to the conference and workshops; conference package, which includes materials, kit, bag, and ID; conference proceedings; and field trip. Deadline for registration is on 30 September 2009.

Fifty (50%) percent of the registration fee can be refunded for cancellations made on or before 15 September 2009. No refund will be given for cancellations made after this date.

The Secretariat will post/email a confirmation letter acknowledging your registration.

Exhibition

Exhibitors must complete an Exhibit Registration Form and return it by fax, email or post to the Secretariat.

Booth Rates

US\$350 for government and non-profit organizations (Early bird rate: US\$300 if applications and payments received by 30 April)

US\$450 for corporate entities (Early bird rate: US\$400 if applications and payments received by 30 April)

The booth rates cover all the opportunities and amenities provided in the booth package as well as the electrical consumption for the use of either 1) two laptops or 2) one laptop and one projector. Additional US\$5 will be charged for each extra device other than a laptop and projector.

Booth Package

- 2m x 3m booth area
- one table and two chairs
- two fluorescent lamps
- one set 250W/3 gang convenience outlet
- sticker computer cut-out of company name on fascia board
- inclusion in the exhibit directory

Deadline for application is on 30 September 2009. Deadline for payment is on 31 October 2009.

Cancellation Policy

- Cancellations by 31 July 2009: 30% refund of Exhibit payment
- Cancellations from 1 August to 31 October 2009: 10% refund of Exhibit payment
- Cancellations on or after 1 November 2009: No refund

To access registration form for exhibitors and for more details on exhibit arrangements, please log on to <http://www.pemsea.org/eascongress/side-events/exhibition-on-good-practices-and-innovative-technologies/>.

Mode of Payment

Payment can be made by cash, check or money order, telegraphic transfer or credit card (Visa, MasterCard and American Express only). Credit card payments can be made online at the Congress website.

Participants opting to pay via telegraphic transfer should contact the Secretariat for the complete banking details. Participants shall shoulder all related bank charges when paying through telegraphic transfer.

Accommodation

The Congress Organizer will cover the cost of accommodation for PEMSEA supported/sponsored participants. However, incidental charges such as laundry, local and international calls, mini bar consumption, etc. shall be charged to the participants' individual accounts.

For participants who are not sponsored, the Secretariat has blocked-off a limited number of hotel rooms at special rates, ranging from US\$40-180. Participants are advised to make reservations as early as possible to be able to avail of the special Congress room rates. Reservations after 30 October 2009 will be subject to room availability, and extension of discounted room rate will be at the hotel's discretion. To avail of the special rates, please fill up the attached hotel reservation form and submit to the Congress Secretariat accompanied by a one-night deposit by cash or credit card debit authorization.

5-Star Hotels:

				
Sofitel Philippine Plaza	Diamond Hotel	Pan Pacific Hotel	Hyatt Hotel and Casino	The Heritage Hotel Manila
<p><i>Only Suite Rooms available at this time</i></p> <p>Luxury Club – PhP12,800 (20 rooms allocated)</p> <p>Sofitel Suite – PhP19,800 (20 rooms allocated)</p> <p>> rates are net and inclusive of buffet breakfast</p>	<p>Superior Single – PhP8,131.00</p> <p>Deluxe Single – PhP9,306.00</p> <p>Superior Double – PhP9,870.00</p> <p>Deluxe Double – PhP10,481.00</p> <p>> rates are net and inclusive of buffet breakfast</p> <p>> 200 rooms allocated</p> <p>> with complimentary AM shuttle to Congress venue</p>	<p>Superior Sgl/DbI – PhP6,396 / PhP7,011</p> <p>Deluxe Sgl/DbI – PhP7,011 / PhP7,626</p> <p>Executive Rooms Sgl/DbI – PhP7,626 / PhP8,241</p> <p>> rates are net and inclusive of buffet breakfast</p> <p>> 75 rooms allocated</p> <p>> with complimentary AM shuttle to Congress venue</p>	<p>Guest Room King Single – PhP8,131.00</p> <p>Guest Room King Double – PhP9,024.00</p> <p>Club King Single – PhP9,870.00</p> <p>Club King Double – PhP11,938.00</p> <p>> rates are net and inclusive of buffet breakfast</p> <p>> 100 rooms allocated</p>	<p>De Luxe Single – PhP6,500.00</p> <p>De Luxe Twin/DbI – PhP7,000.00</p> <p>> rates are net and inclusive of buffet breakfast</p> <p>> 200 rooms allocated</p> <p>> with complimentary scheduled drop-off to Congress venue</p>

* Foreign exchange rate may vary from time to time. As of February 2009 the conversion rate of USD1.00 is PhP47.00.

4-Star Hotels:

		
Traders Hotel by Shangri-La	G-Hotel Manila by Waterfront	Bayview Park Hotel
<p>Superior Room - PhP6,756.75</p> <p>Deluxe City View – PhP7,371</p> <p>Traders Club – PhP9,213.75</p> <p>> rates are net and inclusive of buffet breakfast</p> <p>> 75 rooms allocated</p> <p>> with complimentary AM shuttle to Congress venue</p>	<p>Deluxe Single or Double – PhP4,200</p> <p>> rates are net and inclusive of buffet breakfast</p> <p>> 30 rooms allocated</p>	<p>Superior Single – PhP3,000</p> <p>Superior Twin – PhP3,300</p> <p>Triple Occupancy – PhP3,800</p> <p>> rates are net and inclusive of buffet breakfast</p> <p>> 100 rooms allocated</p>

3-Star/Boutique Hotels:

				
Orchid Garden Suites	Palm Plaza Hotel	Executive Plaza Hotel	Lotus Garden Hotel	City Garden Suites
<p>Single/Twin Occupancy – PhP2,000</p> <p>> rates are net and inclusive of set breakfast</p> <p>> 30 rooms allocated</p>	<p>Single/Twin Occupancy – PhP1,950</p> <p>Triple Occupancy – PhP2,250</p> <p>> rates are net and inclusive of set breakfast</p> <p>> 80 rooms allocated</p>	<p>Single Occupancy – PhP2,050</p> <p>Twin Occupancy – PhP2,300</p> <p>Triple Occupancy – PhP2,750</p> <p>> rates are net and inclusive of set breakfast</p> <p>> 90 rooms allocated</p>	<p>Superior – PhP2,400</p> <p>Deluxe – PhP2,600</p> <p>Triple Sharing – PhP3,400</p> <p>> rates are net and inclusive of buffet breakfast</p> <p>> 25 rooms allocated</p>	<p>Standard Sgl/DbI – PhP2,100 / PhP2,300</p> <p>Deluxe Sgl/DbI – PhP2,800 / PhP2,900</p> <p>> rates are net and inclusive of buffet breakfast</p> <p>> 20 rooms allocated</p>

* Foreign exchange rate may vary from time to time. As of February 2009 the conversion rate of USD1.00 is PhP47.00.

EAS Congress 2009
Venue and Hotels Vicinity Map

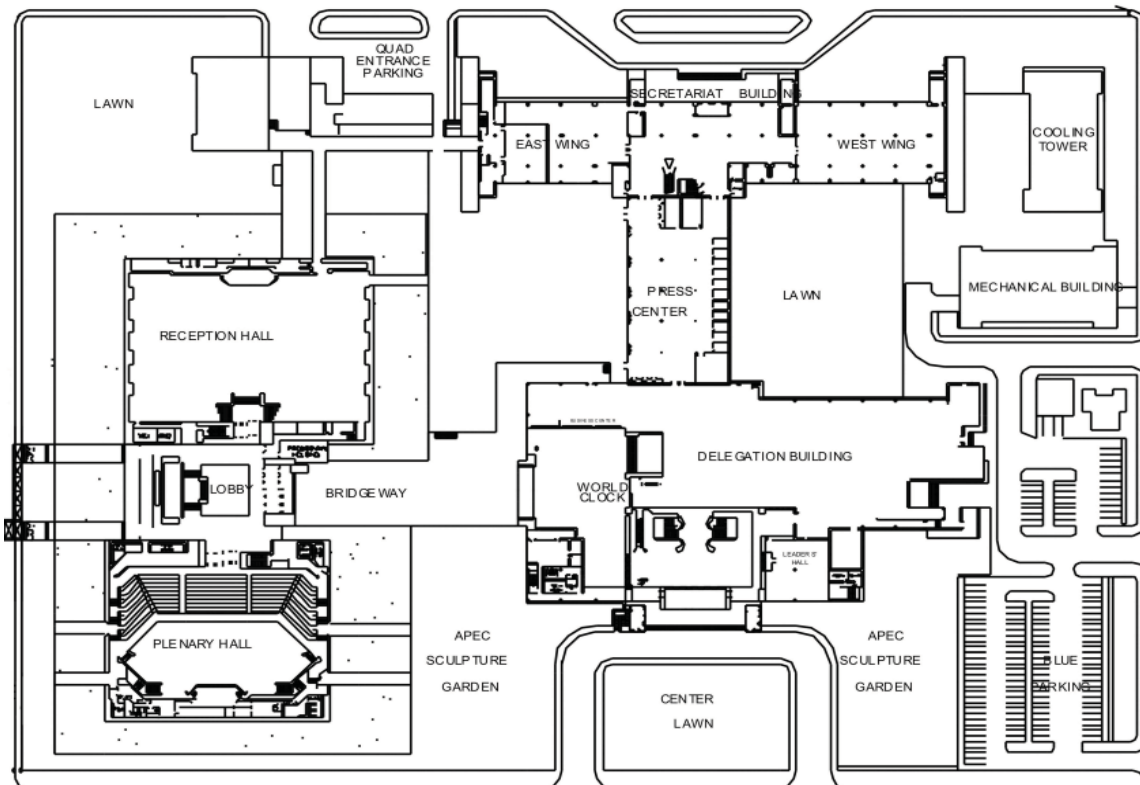


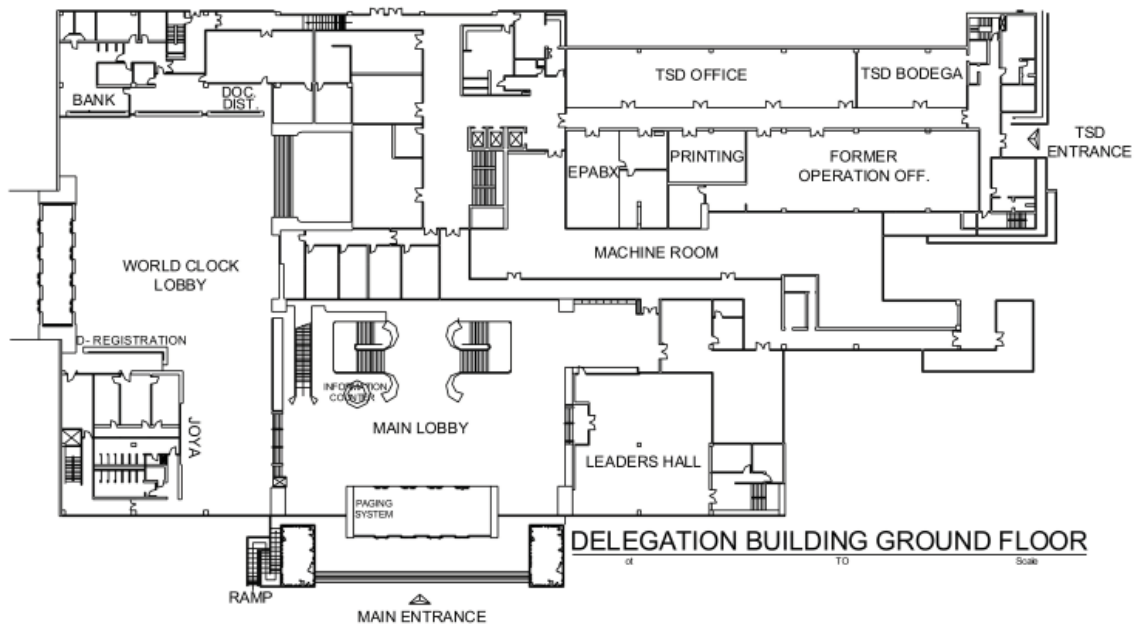
General Information

Congress Venue

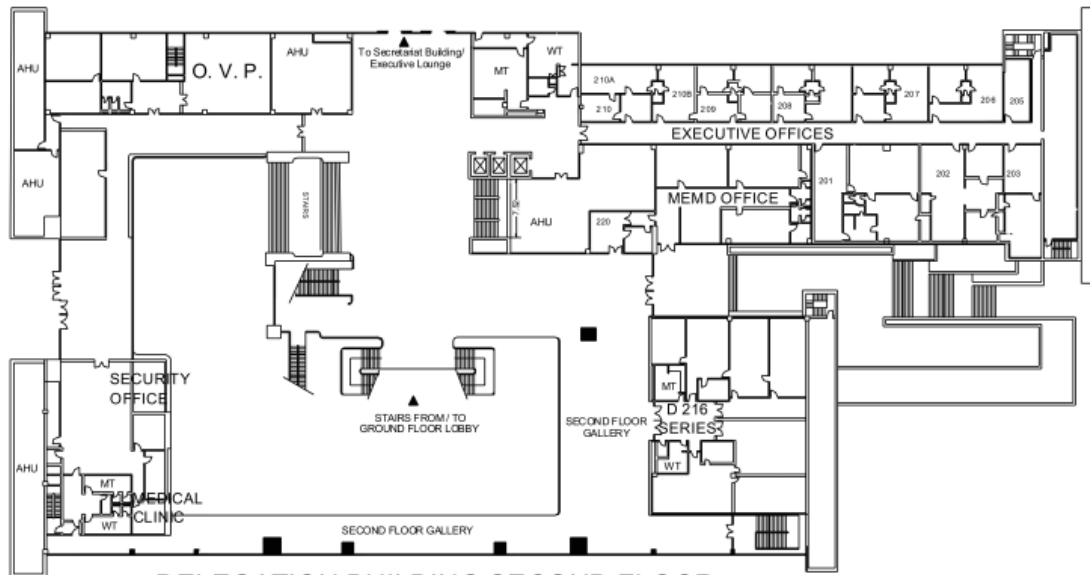
The Philippine International Convention Center (PICC) has been selected as the venue of the East Asian Seas Congress 2009.

Strategically located, PICC is at the heart of Manila and along scenic Manila Bay, a few minutes from the international airport, major hotels and tourist sites.

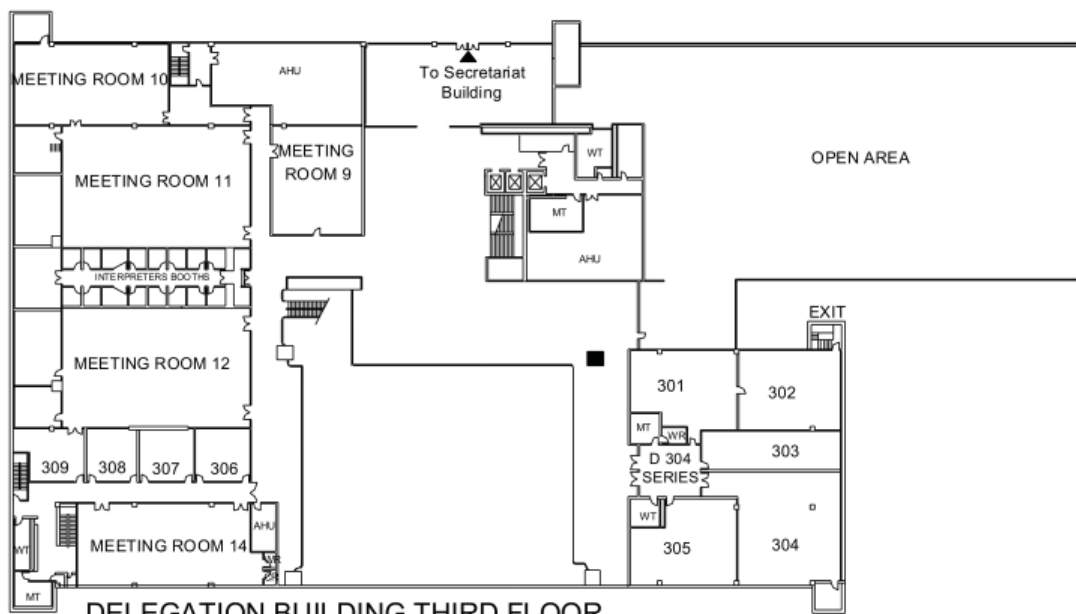




DELEGATION BUILDING GROUND FLOOR



DELEGATION BUILDING SECOND FLOOR



DELEGATION BUILDING THIRD FLOOR

Liability

The Congress organizers accept no responsibility for any damage or injury to persons or property during the Conference. Participants are advised to arrange for their own travel and health insurance.

Travel

For PEMSEA-sponsored participants, the Congress Secretariat will contact you separately regarding airline booking and other travel arrangements.

For non-sponsored participants and booking their own air-tickets, please inform the Congress Secretariat of your flight details.

Passport and Visa Requirements

Participants may be required to obtain an entry visa to the Philippines. Please consult the Philippine Embassy or Consulate in your country for detailed information on entry requirements or exemptions. Please ensure that your passports are valid at least 6 months from date of travel.

Letters of Invitation

Letters of invitation to assist in governmental regulations and visa processing may be requested from the Secretariat.

Climate/Tourism

The Philippines has a tropical climate with relatively abundant rainfall and gentle winds. There are three pronounced seasons: the wet or rainy season from June to October, the cool, dry season from November to February, and the hot, dry season from March to May.

Temperature in Manila ranges from 21°C to 32°C with a 27°C average. The coolest month is January and the warmest is May. Both temperature and humidity levels reach the maximum in April and May, but these are generally good months for aqua sports and mountain trekking. Some of the most colorful festivals are held during these months.

Airport*

Ninoy Aquino International Airport (NAIA) (Terminals 1, 2 and 3), outside the city proper, serves Manila, the Metro Manila area and the nearby provinces. Over 40 airlines provide daily service to over 26 cities and 19 countries worldwide. Approximately 17 million travelers use NAIA a year, straining what was originally a domestic airport built in the 1930s. A second terminal, Terminal 2 (or the Centennial Terminal) opened in October 1999. The International flag-carrier Philippine Airlines now uses this terminal exclusively for both its domestic and international service while all other international flights use the original NAIA terminal.

Transportation*

Taxi service is available to NAIA from all points of Metro Manila. Also, jeepney and bus routes are available to the airport. Both forms of transportation facilities connect all three NAIA terminals as well. Take only official, metered or pre-booked taxis. Do not accept rides from people that approach you in the terminal. Airport taxis

charge around 400-500 Pesos (10+USD) to central Manila hotels. It will take about 20 minutes to one hour for the trip, depending on traffic. Many of the major hotels run cars which you can book in advance, or you can look for a hotel representative in Arrivals. The cost varies from 750-1,200 Pesos (16USD-26USD). Manila airport is also connected to the Manila Light Rail Transit System (LRT) by a two-kilometer taxi ride to Baclaran station.

The local host and the Secretariat are making efforts to set up an assistance desk at the airport for all the participants in the EAS Congress 2009. We will advise you once this is finalized.

If transportation is needed within Manila and neighboring locations, the Secretariat and the LOC will be happy to assist in making arrangements as necessary. Taxi is available in Manila depending on your needs.

Time Zone

GMT + 8 hours



Manila, the Host City*

The city of MANILA, known as Maynila for the Filipinos, is the capital city of the Philippines and one of the cities that make up the greater metropolitan area of Metro Manila. Manila is the center of government in the country and one of the central hubs of a thriving metropolitan area home to over 14 million people. It is located on the shores of Manila Bay just west of the geographical center of Metro Manila, also known as the National Capital Region (NCR), which lies on an isthmus between Manila Bay and Laguna de Bay in southern Luzon. The city is one of 17 cities and municipalities which form the metropolitan area.

From shopping malls to high class sea ports, Manila City got it all, and one of the most visited places here is the Rizal Park where Philippines' national hero, Dr. Jose Rizal, was executed and buried. His monument was made there to commemorate his works for his motherland.

The crown jewel of Manila attractions is Intramuros, the stately fortress city Spain built in the 16th century. Literally meaning "within walls", Intramuros was erected on top of an early Muslim settlement, and grew in power as it was a key stop on Spain's galleon route. Its walls fell only during WWII, as Manila Philippines was the second most devastated city after the war. But prior to its downfall, Intramuros was known for its elegant European-style architecture and parks, earning Manila the name "Paris of the East".

We can still glimpse echoes of its former glory in some of the buildings. San Agustin Church is one of the most venerable Manila attractions, being the oldest church in the city, and home to eccentric Catholic curios and tombs of prominent families in Manila Philippines. Casa Manila, a charming mansion fronting the church, displays the ostentatious lifestyle of 18th century bourgeoisie. Fort Santiago, at the mouth of the Pasig River, is the complex's military center, whose rooms and dungeons witnessed a lurid past. Jose Rizal, a writer, revolutionary, and the country's national hero, is honored with a beautifully curated shrine here.

*Sources: www.manila.gov.ph; www.destination360.com.