

Rainfall Logging System

Quality logging of rainfall for hydrological applications



INTRODUCTION

The Rainfall Logging System from Casella, provides a robust, reliable stand alone method of monitoring rainfall. It can be supplied complete with the Casella 0.1, 0.2 & 0.5 mm tipping bucket rain gauges, or as a separate unit for use with other gauges.*

With low power requirement, the unit can operate under high intensity rainfall conditions and has internal memory capacity for up to 13000 data records. Data can be downloaded to a laptop, PC or PDA via RS 232 (USB adaptor available). Additionally, remote telemetry is supported via GSM or PSTN modems*.

A comprehensive software package allows tabular and graphical analysis of the rainfall data.

APPLICATIONS:

- Hydrology
- General rainfall monitoring
- Rainfall distribution & intensity
- Remote monitoring
- Leachate /run-off monitoring
- Ecological studies
- Agriculture
- Climate change studies

Features:

Low maintenance
Data download to PDA
Visual status and battery indicators
64K memory capacity
Pulsed output channel

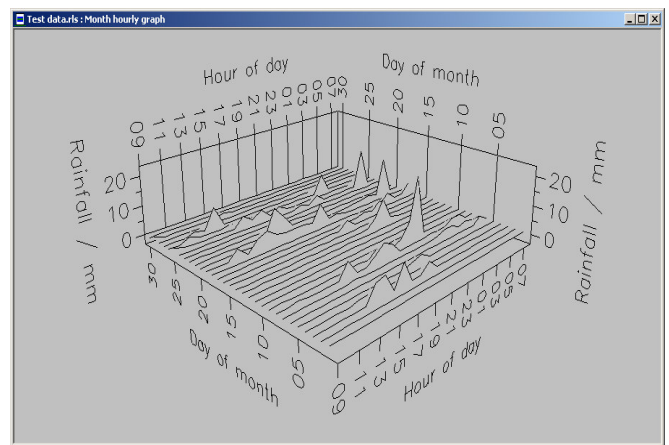
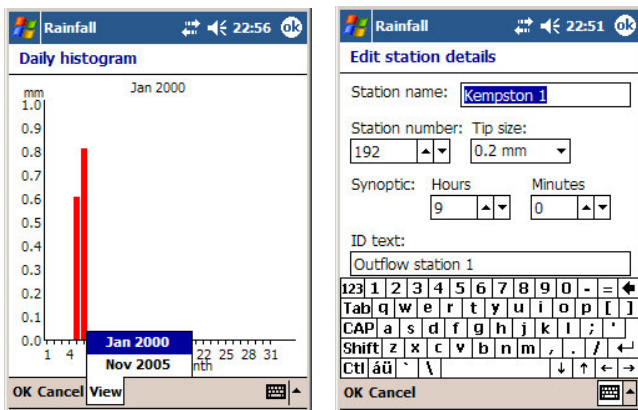
*Integral rainfall intensity correction
*Remote solar power GSM module
*Remote data collection via GSM
*SMS alarm for event or intensity

Software:

Rainfall is Casella CEL's PC based software solution for the RLS. It provides users with a powerful and versatile Windows based solution for the accumulation, processing and presentation of rainfall data. The software is backwards compatible with existing Casella RLS units.

Gauges can be configured and downloaded via PC or PDA. Remote access of on-site systems can also take place via external GSM modem*.

Example PDA screen displays

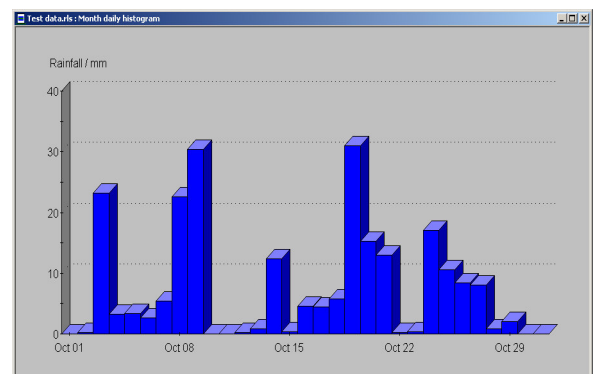


Technical Specification:

Logger dimensions: 138 x 103 x 54mm
Input channel: Volt free contact closure
Output: Intensity corrected pulsed output (open collector)*
Alarm output: GSM/SMS for rainfall event or intensity*.
Datalogger:
Memory Size: 64K
Recorded Data: Event, Date & Time >13000 rainfall records.
(Zero rainfall is not recorded.)
Logging resolution: Total tips in 1min / * 1 Sec for intensity.
Batteries: 4 x AAA Alkaline. Typically >5 years.
Back up coin cell: CR2032 Typically >10 years.
Communications: RS232 (USB via adaptor).
Operating Temperature Range: -10 to +50°C.
Operating Humidity Range: 0-100% non-condensing.

TBRG Accuracy: +/- 1% at calibration flow rate.
Units supplied with traceable certificate.
Applicable standard: BS7843-3.2 :2005.

Kit comprises: Bucket, Logger, RS232 cable and PC software.



Ordering Information:

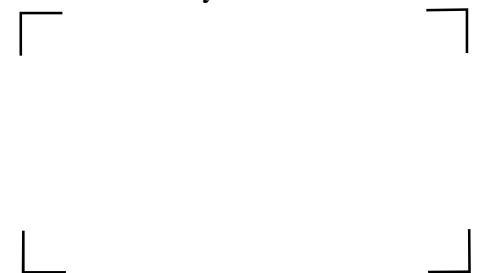
0.1mm Raingauge with RLS: 103801D
0.2mm Raingauge with RLS: 103800D
0.5mm Raingauge with RLS: 103802D
Datalogger only: 103803C
RS232 to USB adaptor : CEL - 90336

Distributed By:

Casella CEL
Regent House
Wolseley Road
Kempston
Bedford, MK42 7JY
Tel: +44 (0) 1234 844100
Fax: +44 (0) 1234 841490
E-mail: info@casellacel.com
Web: www.casellacel.com

Casella USA
17 Old Nashua Road
#15, Amherst
NH 03031
U.S.A.
Toll free: +1 (800) 366 2966
Fax: +1 (603) 672 8053
E-mail: info@casellaUSA.com
Web: www.casellaUSA.com

CasellaEspaña S.A.
Polígono Európolis
Calle C, nº4B
28230 Las Rozas - Madrid
Spain
Phone: + 34 91 640 75 19/61
Fax: +34 91 636 01 96
E-mail: online@casella-es.com
Web: www.casella-es.com



* Contact Casella CEL for information